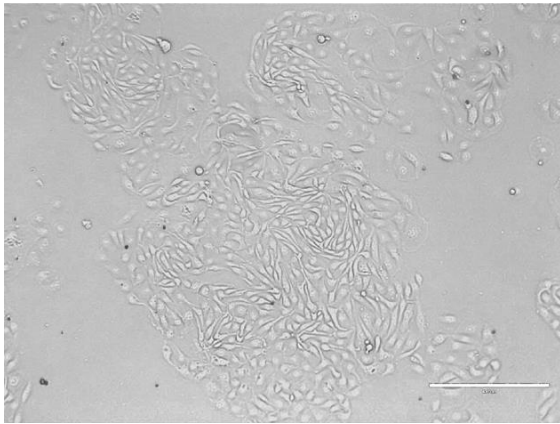




Human Kidney Cortical Cell Mix



Cryopreserved Human Kidney Cortical Cell Mix is a heterogeneous cell mixture isolated from the cortex of human kidneys that are deemed not suitable for transplantation, and have received consent to be donated for research. Mixes can be utilized to study heterogeneous kidney populations, or be further processed into homogenous cell populations. Major cell types include but are not limited to:

- Proximal tubules
- Distal tubules
- Endothelial cells (including glomerular endothelial cells)
- Mesangial cells
- Podocytes
- Interstitial fibroblasts
- Epithelial Bowman's Capsule Cells
- Residing renal adult progenitor cells
- Juxtaglomerular cells

QC Testing

Cortical cell mixes are characterized by yield, viability, and morphology. Cell makeup is analyzed by flow cytometry for major cell populations. Mixes are comprised of terminally differentiated cells and adult renal progenitor cells.

Advantages

- **Reproducibility:** same donor can be used for long-term testing
- **Convenience:** no waiting for fresh cortical cells to become available and the cryopreserved vials are not time-sensitive
- **Versatility:** various cell types can be studied or selected/ expanded from cortical cell mixes
- **Characterization:** cells have been extensively characterized by attachment, viability, and surface/ internal marker expression
- **More comprehensive donor information**

Applications

Novabiosis Human Kidney Cortical Cell Mixes are ideal in studies of:

- function and pathophysiology of the kidney
- toxicity
- drug transporter research
- tissue engineering
- cell population analysis from individual donors
- homogenous cell population isolation by FACS or magnetic sorting
- urine regulation

Donor information including: cause of death, age, gender, race, BMI, diabetic status, smoking history, alcohol use, substance use, HLA typing, serology and culture results, and co-morbidities, if any, is also included on the CoA.

Serology results include (positive or negative): CMV, EBV, Toxo, HBV, HCV, HIV-1, HIV-2. Additional serology results may be provided upon request.

Culture results include (positive or negative): Gram +, Gram -, Mycoplasma, Fungi.



Catalog Information

Cryopreserved Human Kidney Cortical Cell Mix

- Cat. # 3001

Product Storage and Warranty

CULTURES HAVE A LIMITED LIFESPAN *IN VITRO*.

Upon receipt, immediately store cryovial(s) in vapor phase liquid nitrogen.

Cryopreserved human hepatocytes are viable for at least 2 years when stored under these conditions.

Novabiosis guarantees the performance of its cells only if following Novabiosis-specific instructions exclusively and the recommended products and protocols are used and followed.

The performance of the cells is not guaranteed if any modifications are made.

THESE PRODUCTS ARE FOR RESEARCH USE ONLY.