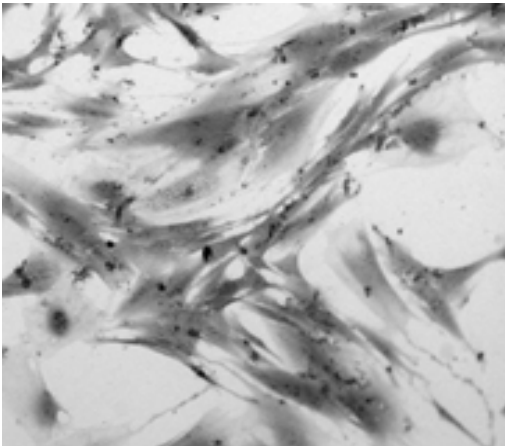




Novabiosis Cryopreserved Primary Human Intestinal Myofibroblast Cells

Primary Human Intestinal Myofibroblast cells are isolated from whole adult human intestines that are suitable for transplantation. The myofibroblasts are isolated from the descending colon. The cell composition consists of a heterogeneous population of myofibroblasts distinctly from the above region and the cells are tested for viability, morphology, and attachment efficiency (by Crystal Violet). Myofibroblasts are characterized by immunofluorescent staining positive for alpha smooth muscle actin and negative for desmin.



Advantages

- Investigation of several GI diseases, such as inflammatory bowel disease (IBD), colon and gastric cancer.
- Using Novabiosis Intestinal Myofibroblast cell media, the myofibroblast cells can be maintained for as long as 5-7 to use to study gene expression, metabolism, and drug absorption.

Applications

- Toxicology pertaining to oral medication
- Toxicity, drug screening, absorption studies, and gene expression.
- Laboratory research use only.

Donor Info Includes:

Donor age, sex, race, diabetic status, smoking history, alcohol use, and co-morbidities.

Serology results include

HIV, Hepatitis B, Hepatitis C, CMV, EBV, HBV, HCV, HIV-1, HIV-2. Potentially HLTV-1 and HLTV-2 (if performed), bacteria, yeast.

Cell Performance Testing:

Viability, cells per vial, Coverage by Crystal Violet at day 7, positive for Alpha Smooth Muscle Actin, and negative for desmin.

Product Warranty

CULTURES HAVE A LIMITED LIFESPAN IN VITRO

Novabiosis guarantees the performance of its cells only if following Novabiosis specific use instructions exclusively, and the recommended protocols are followed. The performance of the cells are not guaranteed if any modifications are made. Cryopreserved primary human intestinal cells are assured to be viable and functional when thawed and maintained properly.

THESE PRODUCTS ARE FOR RESEARCH USE ONLY

Not approved for human or veterinary use, for application to human or animals, or for use in clinical or in-vivo procedures.

Order Info

Item	Product Name	Quantity	Shipped
4011	Human Intestinal Epithelial Cells Ascending Colon (NhIMAC-P5)	>800,000 cells/vial	Cryopreserved
4013	Human Intestinal Myofibroblasts Cells Descending Colon (NhIMDC-P6)	>800,000 cells/vial	Cryopreserved
4014	Human Intestinal Myofibroblasts Cells Duodenum (NhIMD-P4)	>800,000 cells/vial	Cryopreserved
4012	Human Intestinal Myofibroblasts Cells Transverse Colon (NhIMTC-P6)	>800,000 cells/vial	Cryopreserved
4016	Human Intestinal Myofibroblasts Cells Ileum (NhIMI-P4)	>800,000 cells/vial	Wet Ice
4101	Novabiosis Intestinal Myofibroblasts Cell Medium (IMC)	125 mL	Wet Ice